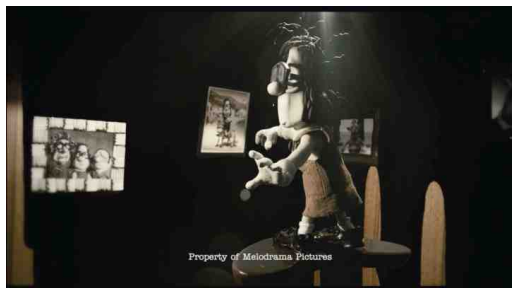


Michael Allen – Composer – July 2009 – Demoreel Breakdown – Page 1

Melbourne, Victoria, Australia

contact@mickjallen.com.au

http://www.mickjallen.com.au



Shot 1 Title: Que Sera Sera Main

Source: *Mary & Max – Feature Film*

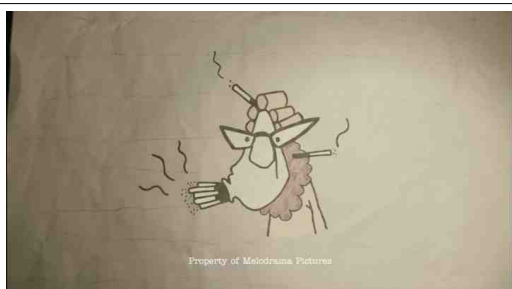
Tasks performed:
VFX supervision, compositing lead



Shot 2 Title: Mary's first letter (Ethel)

Source: *Mary & Max – Feature Film*

Tasks performed:
Look development (2D on paper), all compositing



Shot 3 Title: Mary's first letter (Vera)

Source: *Mary & Max – Feature Film*

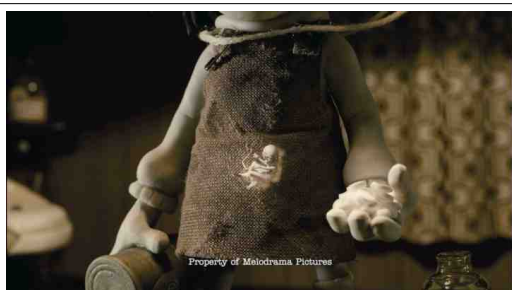
Tasks performed:
Look development (2D on paper), all compositing



Shot 4 Title: Max reads letter in bed (Noblet)

Source: *Mary & Max – Feature Film*

Tasks performed:
Look development (2D on paper), compositing lead



Shot 5 Title: Mary's baby reveal

Source: *Mary & Max – Feature Film*

Tasks performed:
All compositing



Shot 6 Title: Mary's POV hospital

Source: *Mary & Max – Feature Film*

Tasks performed:
Look development (smoke), all compositing, blink animation overlay

Michael Allen – Composer – July 2009 – Demoreel Breakdown – Page 2

Melbourne, Victoria, Australia

contact@mickjallen.com.au

http://www.mickjallen.com.au



Shot 7 Title: Max light bulb in mirror
Source: Mary & Max – Feature Film

Tasks performed:
Look development (light bulbs), all compositing



Shot 8 Title: Mary thought bubble in bathroom
Source: Mary & Max – Feature Film

Tasks performed:
Look development (thought bubbles), all compositing



Shot 9 Title: Mount Waverley opening
Source: Mary & Max – Feature Film

Tasks performed:
All compositing



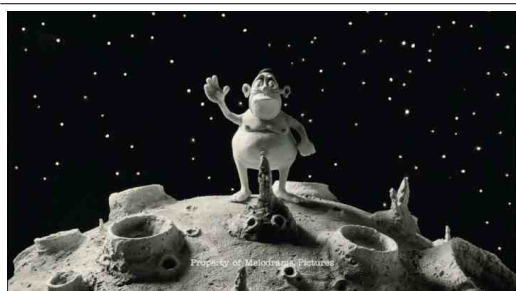
Shot 10 Title: St Kilda Walk
Source: St Kilda Film Festival 2008 Trailer

Tasks performed:
VFX supervision, compositing lead, rotoscoping, all painting



Shot 11 Title: Framegrabber
Source: Mary & Max – Feature Film

Tasks performed:
All programming and development



Shot 12 Title: Max on the Moon
Source: Mary & Max – Feature Film

Tasks performed:
Look development (star twinkle), compositing lead